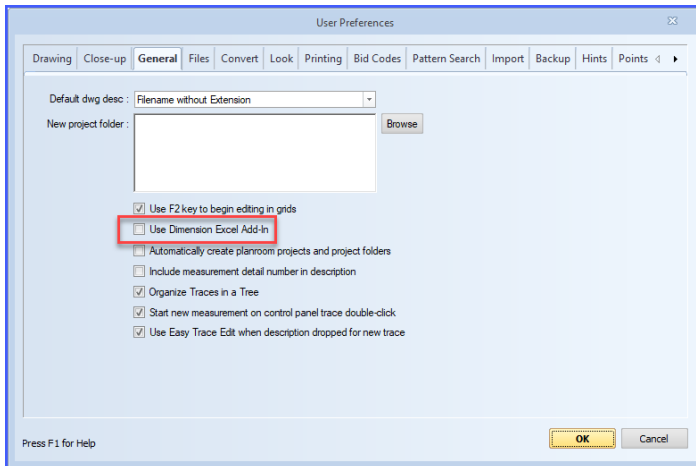


Setting Up the Excel Add-on for eTakeoff Dimension

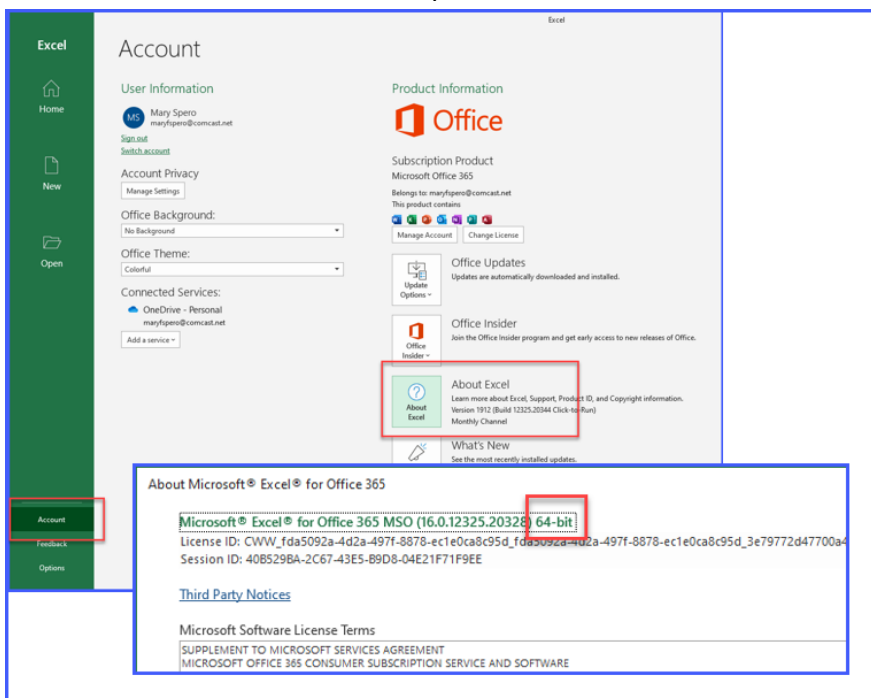
The Add-on is available for Microsoft Windows Excel Versions 2016 & MS Office 365.

NOTE: eTakeoff Dimension v8 or above is required for the 64 Bit version of Excel.

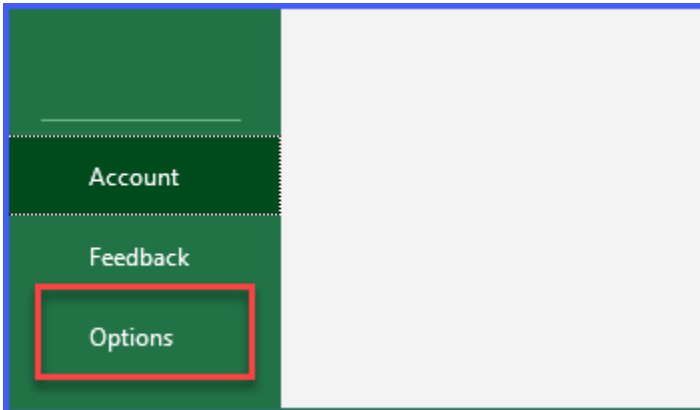
1. The Excel Add-on is built into eTakeoff Advanced and Premier. To activate it, open eTakeoff and click on the Settings Tab and then click the User Preferences button. On the “General” Tab, click the check box next to “Use Dimension Excel Add-in” and then click “OK”.



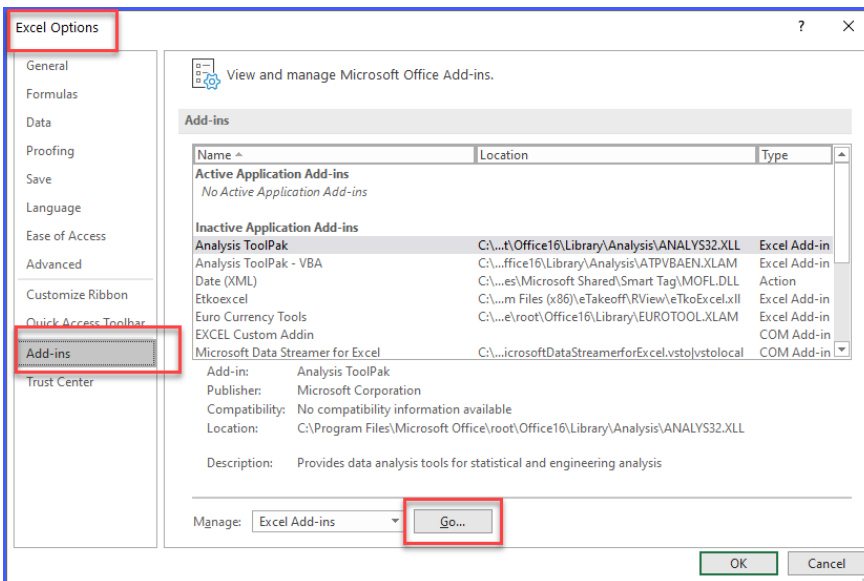
2. You will need to know if your version of Excel is 32 bit or 64 bit. To check, open Excel, click the File tab and then select Account. Click the “About Excel” button. You will see the version information at the top of the window.



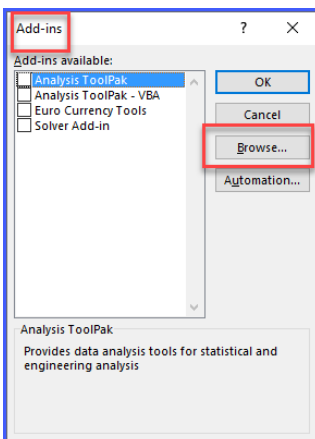
3. Close the “About Microsoft Excel” Window.
4. Select “Options” on the lower left side of the Excel/File Window.



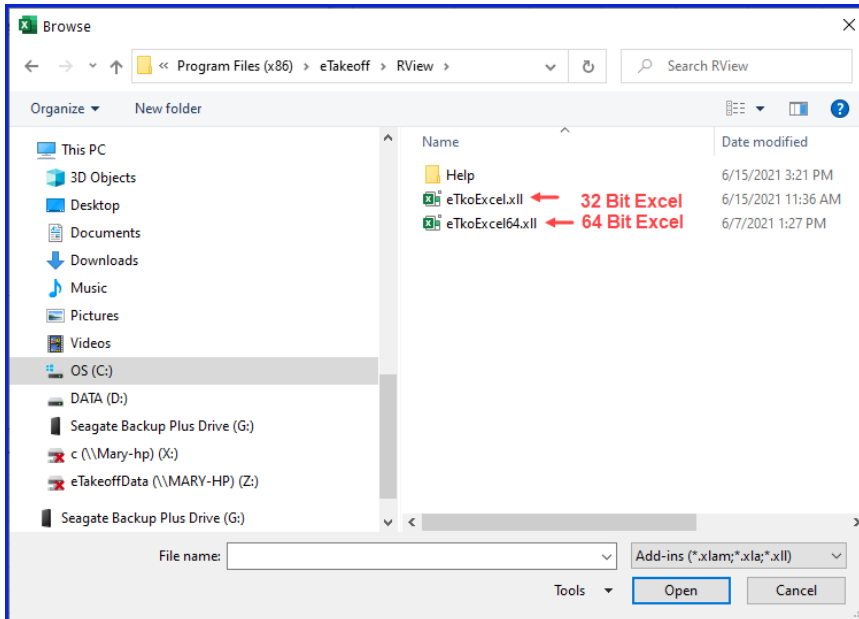
5. The “Excel Options” window will be displayed.
Select “Add-ins” on the left side then click the “Go...” button at the bottom of the window.



6. In the Add-ins window, click on the Browse button.



7. Navigate to C:\Program Files(x86)\eTakeoff\RView.

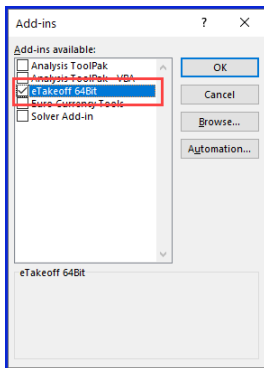


8. Select **eTkoExcel.xll** if you are running **Excel 32 Bit version**.

Select **eTkoExcel64.xll** if you are running **Excel 64 Bit version**.

9. Click on the Open button.

10. You will be directed back to the Add-ins window with a box checked for the eTakeoff Addon.



11. Click OK.

12. You should now have an "Add-ins" Tab with the eTakeoff Add-in under the tab.

